

GigaVUE-212 Product Brief



Features:

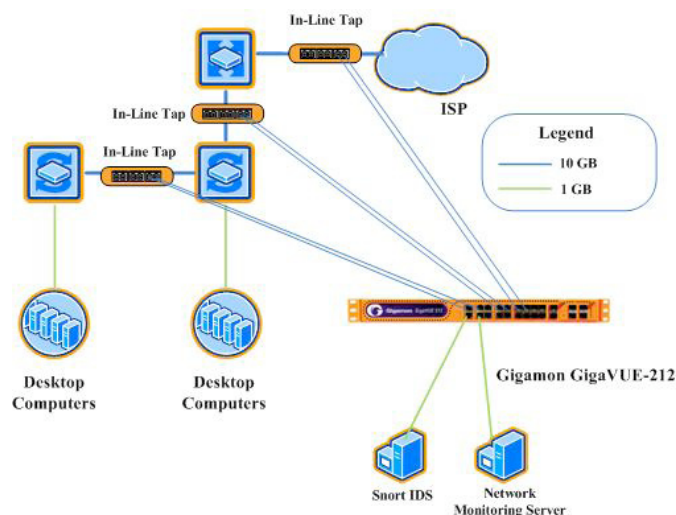
- Any-to-Any connectivity to solve tool deployment issues
- Aggregate 10G links to 1G or 10G tools
- Intelligently filter via Citrus web GUI or CLI
- Replicate traffic to multiple tools to share data sources
- Solutions for monitoring asynchronously routed Ethernet Networks including 10 GigE
- Hardware based design for full line rate performance and near-zero latency
- Optional integrated TAP modules

Benefits:

- Immediate ROI by consolidating distributed tools and reducing management expense
- Near zero latency architecture allows for accurate measurement of time sensitive protocols and QOS
- Reduce packet loss to improve monitoring fidelity
- Support continuous monitoring and scalable growth with hot-swap modules

Applications:

- Share span ports among multiple tools
- Filter and customize data flow to each tool
- Divide large loads across multiple tools
- Aggregate multiple links to multiple tools



Product Description

Gigamon delivers intelligent data access solutions to enhance network monitoring of data centers, service provider and enterprises.

The GigaVUE-212™ is an entry level Data Access Switch which aggregates, multicasts, filters and divides traffic flows across multiple passive monitoring tools at a fraction of the cost of similar devices. The switch supports eight 1GE ports and two 10GE ports with an optional expansion module for support of another four 1GE ports.

The GigaVUE-212 Family:

- GigaVUE-212, base chassis with eight 1G & two 10G ports
- GigaPORT copper or optical 4-port expansion module

Contact NextGig Systems
805-277-2400
www.NextGigSystems.com

The GigaVUE-212 is ideal for data centers and enterprises who either require a low-cost option in order to enhance their network monitoring for the first time, or who have areas of their networks where they need lower port counts to support comprehensive monitoring.

With support for plug-in of multiple out-of-band tools, the GigaVUE-212 enables enterprises and data centers to connect any tool to any data stream unobtrusively for the affordable price

Ordering Part Numbers:

- GVS-212 - 8x1G copper or SFP and 2x10G SFP+, AC power
- GVS-212 - 8x1G copper or SFP and 2x10G SFP+, DC power
- PRT-202 - GigaPORT-SFP, 4x1G SFP cage expansion module